

STUDENT LEARNING SURVEY FALL 2021

Division of Student Life

SAN FRANCISCO STATE UNIVERSITY

FEB 8 - 19, 2021

2210

NUMBER OF STUDENTS WHO TOOK THE SURVEY



STUDENT COURSE PREFERENCES FOR FALL 2021



Fully Online
52%



27%
In Person

20%
Hybrid



77%

STUDENTS WHO ARE EXTREMELY OR SOMEWHAT LIKELY TO RECEIVE THE COVID19 VACCINE WHEN IT'S AVAILABLE TO THEM

IF COVID19 IS STILL PRESENT

46% PLAN TO MOVE BACK TO THE BAY AREA FOR FALL 2021

47% PLAN TO LIVE HOME WITH FAMILY FOR FALL 2021



63%

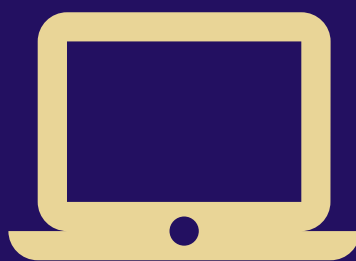
RESPONDED POSITIVELY TO THE VIRTUAL SHIFT

WANT THESE TO CONTINUE POST-PANDEMIC

- REMOTE CLASSES
- COMPASSIONATE & FLEXIBLE FACULTY
- EXTENDED DEADLINES
- ASYNCHRONOUS INSTRUCTION
- LIBRARY ACCESS
- VIRTUAL OFFICE HOURS

30%

SUGGESTED IMPROVEMENTS FOR THE ACADEMIC EXPERIENCE



SUGGESTED IMPROVEMENTS

- CONTINUED FACULTY DEVELOPMENT
- MORE ASYNCHRONOUS LEARNING
- ALTERNATIVES TO VIRTUAL LABS
- MORE ACCESS TO ON-CAMPUS STUDENT STUDY SPACES & TECHNOLOGY

A CAMPUS COMMUNITY WHERE EVERY STUDENT BELONGS AND THE STUDENT EXPERIENCE MATTERS.

THE DIVISION OF STUDENT LIFE
SF STATE

student life[®]
SF STATE

Dean of Students Office
San Francisco State University
dos@sfsu.edu
dos.sfsu.edu